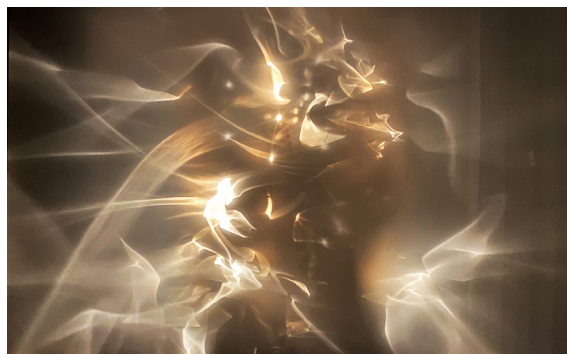


■  
IN SITU  
FABIENNE LECLERC  
■  
43 RUE DE LA COMMUNE DE PARIS  
93230 ROMAINVILLE FRANCE  
T +33 (0)1 53 79 06 12  
GALERIE@INSITUPARIS.FR  
WWW.INSITUPARIS.FR

---



Lars Fredrikson, *B II B*, 1966-67

## Lars Fredrikson / Estate

### ***B II B***

**February 20th - March 26th 2022**

**OPENING : SUNDAY FEBRUARY 20TH 2022, 2 PM - 6 PM**

From the early 1960s, Lars Fredrikson turned his practice to the booming trend of Kinetic art and Op art.

In the wake of Nicolas Schöffer's cybernetic structures, Fredrikson developed electromechanical works featuring a system that was set in motion by an electric motor hidden in a structure resembling a box or a thick chassis.

The artist mastered the almost clockwork functions of these sculptures in motion. Each houses its own complex system, built by Fredrikson himself.

Associated with the exploration of their multiple visual modulations and configurations, their almost hypnotic aspect is encouraged by their whiteness, and in the case of the light works by retinal stimulation inside an exhibition space plunged into darkness.

It was in this context that, from the late 1960s, Lars Fredrikson started using stainless steel sheets for work that lies between engraving, painting, and sculpture, with the artist applying numerous interventions: scratches, lines, incisions, perforations, and hammering were executed on both sides of the sheets. He combined these gestures with traces of paint, sometimes completing them with mobiles made of plexiglas or metal or by curving their surface.

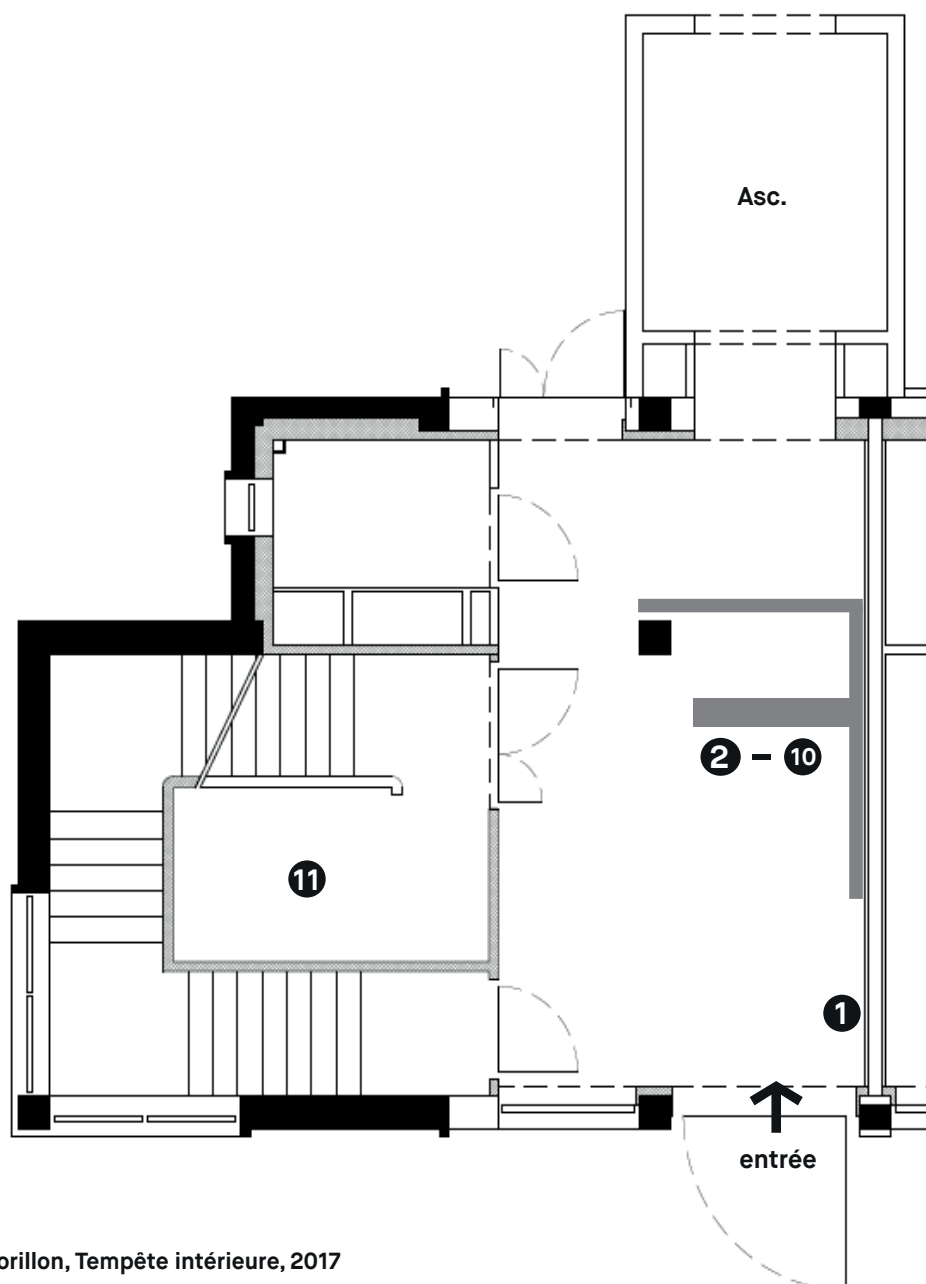
Divided and fragmented, the viewer's body is never entirely reflected in these surfaces, despite the work being placed in such a way as to face them or even incorporate them. With these reliefs, Fredrikson was striking up a dialogue with the architectural space in which they stand, abolishing their limits; when subjected to vibrations (voices around them, tremors in the hanging surface), they echo and magnify their space-producing potential.

Léa Dreyer, 2019

Extracts from the Catalogue of the retrospective exhibition Lars Fredrikson at the MAMAC in Nice, November 2019

# In Situ- Patrick Corillon & Lars Fredrikson

RDC



① Patrick Corillon, *Tempête intérieure*, 2017

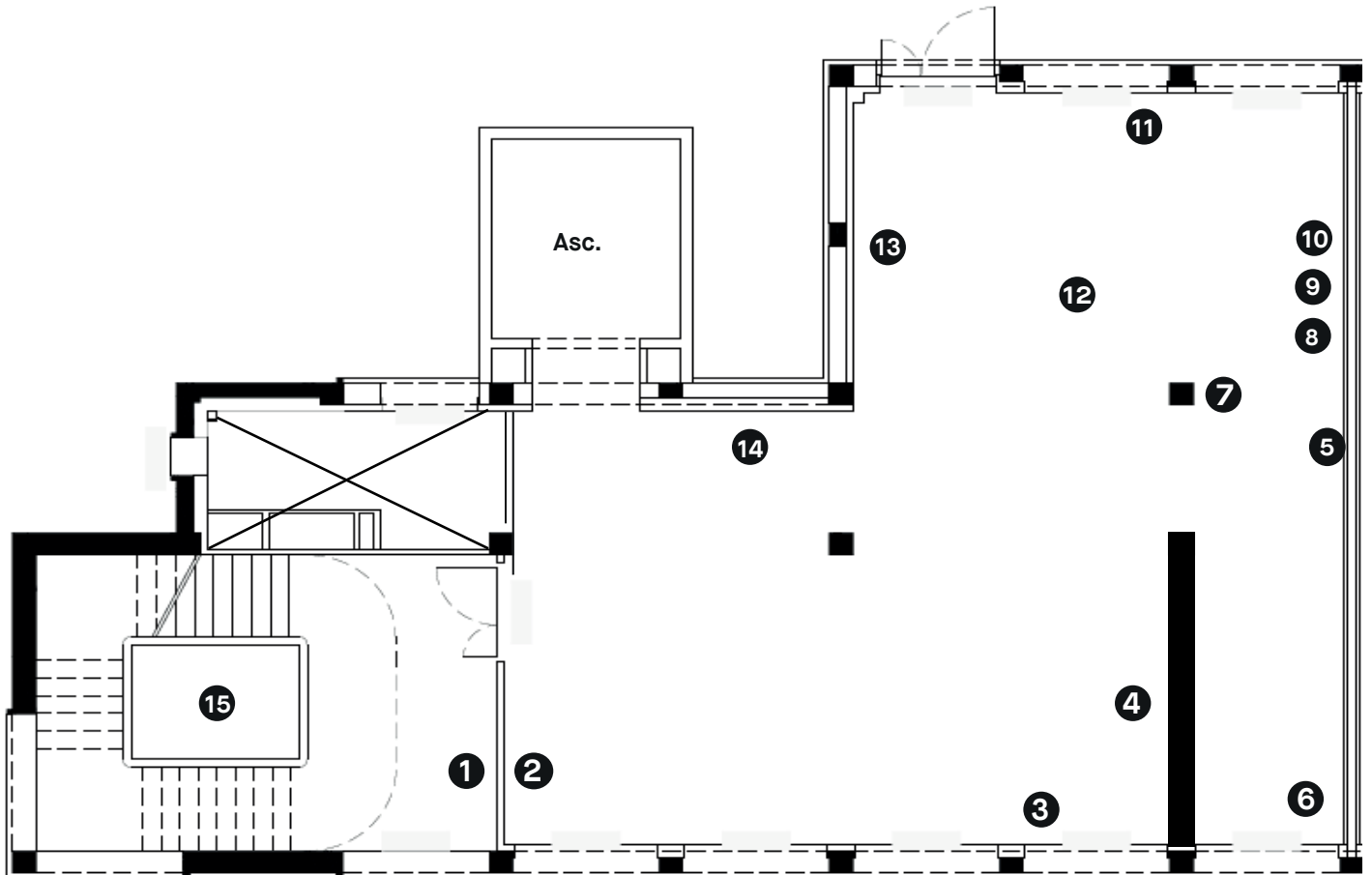
② – ⑩ Lars Fredrikson, *Ecriture subversive - Ecriture pulsée - Télévision*, 1968-69

⑪ Lars Fredrikson, *Ecriture subversive - Ecriture pulsée - Télévision*, 1968-69

# Lars Fredrikson

B II B

## 1er étage



① Lars Fredrikson, Sans titre, 1966

② Lars Fredrikson, Untitled, 1969

③ Lars Fredrikson, Sans titre, 1991

④ Lars Fredrikson, Inox (Triptyque), 1971

⑤ Lars Fredrikson, Sans titre, 1966

⑥ Lars Fredrikson, B II B, 1966-67

⑦ Lars Fredrikson, Sans titre, 1960

⑧ Lars Fredrikson, Sans titre, 1965

⑨ Lars Fredrikson, Sans titre, 1963

⑩ Lars Fredrikson, Sans titre, 1963

⑪ Lars Fredrikson, cf liste au verso

⑫ Lars Fredrikson, Inox, 1971

⑬ Lars Fredrikson, Inox, 1971

⑭ Lars Fredrikson, Inox, 1970

⑮ Lars Fredrikson, Inox, 1971

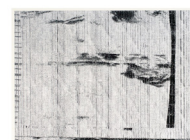
**Fax, 1980**  
Dessin enregistré sur papier électrosensible contre-collé sur papier  
13 x 18 cm ( 40 x 44 x 3 cm encadré )



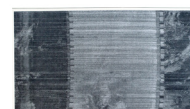
**Fax, 1980**  
Dessin enregistré sur papier électrosensible contre-collé sur papier  
16,5 x 12 cm ( 40 x 34 x 3 cm encadré )



**Fax, 1980**  
Dessin enregistré sur papier électrosensible contre-collé sur papier  
21 x 27 cm ( 42,5 x 48 cm encadré )



**Fax, 1980**  
Dessin enregistré sur papier électrosensible contre-collé sur papier  
22 x 36,5 cm ( 40 x 59 cm encadré )



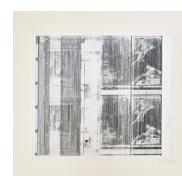
**Fax, 1980**  
Dessin enregistré sur papier électrosensible contre-collé sur papier  
21,5 x 26 cm ( 46,5 x 51 x 2 cm encadré )



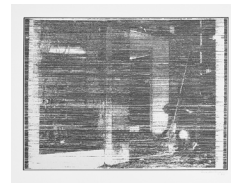
**Fax, 1980**  
Dessin enregistré sur papier électrosensible contre-collé sur papier  
8,5 x 17 cm ( 26 x 34,5 x 3 cm encadré )



**Fax, 1980**  
Dessin enregistré sur papier électrosensible contre-collé sur papier  
38 x 41 cm ( Feuille 64.5 x 80.5 cm ) ( 68 x 84 x 3 cm encadré )



**Fax, 1980**  
Dessin enregistré sur papier électrosensible contre-collé sur papier  
26,5 x 35,5 cm ( 52 x 67 x 3 cm encadré )



**Sans Titre, 1971**  
Gravure sur papier argenté bleu  
50 x 70 cm ( 50,5 x 70,5 x 3,5 cm encadré )



**Sans Titre, 1971**  
Gravure sur papier argenté  
50 x 65 cm ( 50,5 x 65,5 x 3,5 cm encadré )  
Pièce unique



**Sans Titre, 1971**  
Gravure sur papier argenté bleu  
50 x 70 cm ( 50,5 x 70,5 x 3,5 cm encadré )



**Sans Titre, 1971**  
Gravure sur papier argenté  
50 x 65 cm ( 50,5 x 65,5 x 3,5 cm encadré )



**Elyael, 1970-71**  
Gravure sur papier argenté  
50 x 65 cm



**Sans Titre, 1971**  
Gravure sur papier argenté  
50 x 65 cm ( 50,5 x 65,5 cm encadré )

